

GibbsCAM 2011 Enhancements

The GibbsCAM 2011 release continues to enhance the system's overall quality, reliability and performance. Product enhancements and numerous fixes have been made throughout the entire system, delivering ongoing value to existing Maintenance customers as well as new users.

GENERAL IMPROVEMENTS

▶ **New color modes:**

- Feature Color lets you see colors of user-defined features
- User color modes let you see colors applied to particular geometry, faces, surfaces and solids

▶ **Attributes and user-defined features:**

- Recognize and preserve attributes on models imported from other CAD systems
- User-definable attributes, including colors
- Feature Manager for attribute-based features
- Attribute Manager for grouping, searching/sorting, etc.

▶ **Hole Features:**

- Drill process: "Reverse Hole Order" option
- New selection methods for Hole Features; new options for orienting holes
- Auto Wizard in Hole Manager lets you define and manage large groups of Hole Features with only a few clicks
- Hole Manager Preferences to preserve and re-use defaults and settings
- Support for complete range of SolidWorks Hole Features
- Custom drill cycles (see 5-Axis and Mill, below)

▶ **Multi-page Body Bag:**

- Add new Body Bag pages and rename/delete/rearrange them
- Drag bodies or groups between pages or to the Workspace
- Each page has its own display settings (icons/details/tiles) and behaviors (auto-arrange, align, show solid IDs, etc.)

▶ **Variable-length tile lists**

▶ **Solids: Persistence and display of body names and IDs**

▶ **Ability to undo a sort (ops/tools/etc.)**

▶ **New Tool Manager and Process Manager to find/view/sort tools and processes**

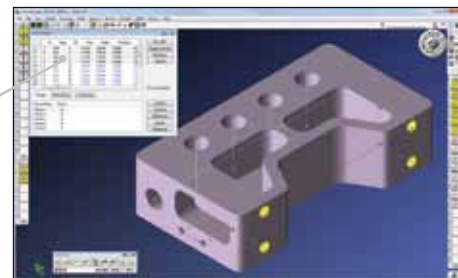
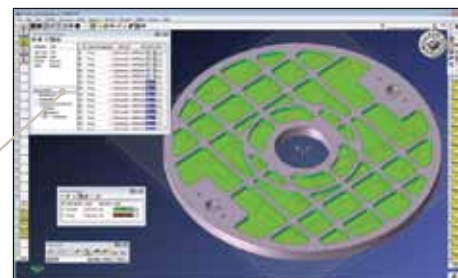
▶ **Data editing now supported by Tool Manager, Process Manager and Op Manager**

▶ **Operation Modifiers for preserving associative alterations to toolpath**

▶ **Define rectangle from edges or corners; offset with square corners**

▶ **Freehand rotate and translate**

▶ **Touch-screen support**

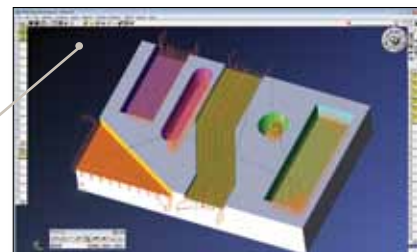


MILL

▶ **Pocketing improvements:**

- Mixed-shape pocketing
- New Offset/Trim tab for offset mill operations
- Depth First support for material-only
- Non-broken finish passes with open sides
- Improved material-only behavior with zero minimum cut (scallop cleanup)

▶ **Custom drill cycles: User-defined toolpath creation using macros**



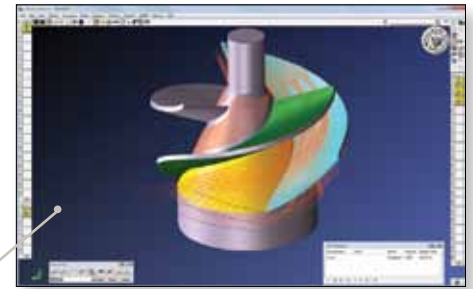
LATHE

▶ **Support for G74 and G75 Fanuc-style grooving cycles**

▶ **B-Axis turning**

VOLUMILL™ SOLIDS AND WIREFRAME

- ▶ VoluMill Solids for solids, sheets and facet bodies
- ▶ Support for Polar & Cylindrical Milling pocketing
- ▶ Freeway Linking™ reduces cycle time by up to 33%
- ▶ Improved Depth First machining
- ▶ Improved cutting near islands
- ▶ Reduced processing time on multi-core CPUs

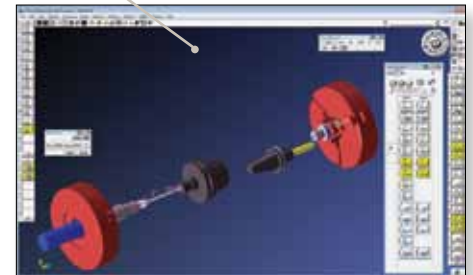


5-AXIS

- ▶ Task Manager: 5-Axis operations processed in background
- ▶ New machining strategies for toolpath generation: Triangle mesh, Wireframe, Swarf machining; also 3-to-5-axis conversion of toolpath
- ▶ Drilling: Drill, peck, tap, and custom drill cycles
- ▶ Toolpath and link move smoothing

MTM (MULTI-TASK MACHINING)

- ▶ Sync Control dialog — drag operations while keeping syncs
- ▶ Undo/Redo changes in Sync Control dialog
- ▶ Custom VMM interfaces
- ▶ Thread Whirling



WIRE-EDM

- ▶ Ability to use sub-programs for multiple cuts
- ▶ Option “Add Finish Stock” for no-core roughing
- ▶ User-definable colors for dimensions and start holes

MACROS

- ▶ New command — IMPORT_FILE <filename> — to import “generic” files (DWG, STEP, ...)
- ▶ Commands to get extent of selected solid, face, or edge
- ▶ Many other new commands, with documentation continuously updated on new wiki: Macros.GibbsCAM.com

DATA EXCHANGE AND CAD INTEROPERABILITY

- ▶ Updated libraries to support Parasolid v23.1 and ACIS R21
- ▶ Support for Solid Edge ST3 v103, KeyCreator 9.0, Rhinoceros v5, SolidWorks 2011, AutoCAD 2011 and Autodesk Inventor 2012, Creo Elements/Pro (Pro/ENGINEER), Wildfire 5.0, CimatronE v10, and others

SYSTEM

- ▶ Further integration of 64-bit
- ▶ Plug-In Manager to control plug-in availability and Plug-Ins menu organization
- ▶ Ability to migrate settings and preferences from previous releases
- ▶ Optimized installation approach:
 - Faster, standardized installation process lets you selectively install/uninstall modules
 - Option to “repair” an installation, and automatic self-healing each time you run GibbsCAM
 - Update notification tells you when a later version is available for download
 - Launch GibbsCAM by right-clicking any supported CAD filename
- ▶ Support for nearly twenty national languages



© 2011 Gibbs and Associates, a Cimatron Company. All rights reserved. The Gibbs and GibbsCAM logos, GibbsCAM, Virtual Gibbs and “Powerfully Simple. Simply Powerful.” are either trademark(s) or registered trademark(s) of Gibbs and Associates in the United States and/or other countries. All other brand or product names are trademarks or registered trademarks of their respective owners. This document is for informational purposes only and is subject to change.